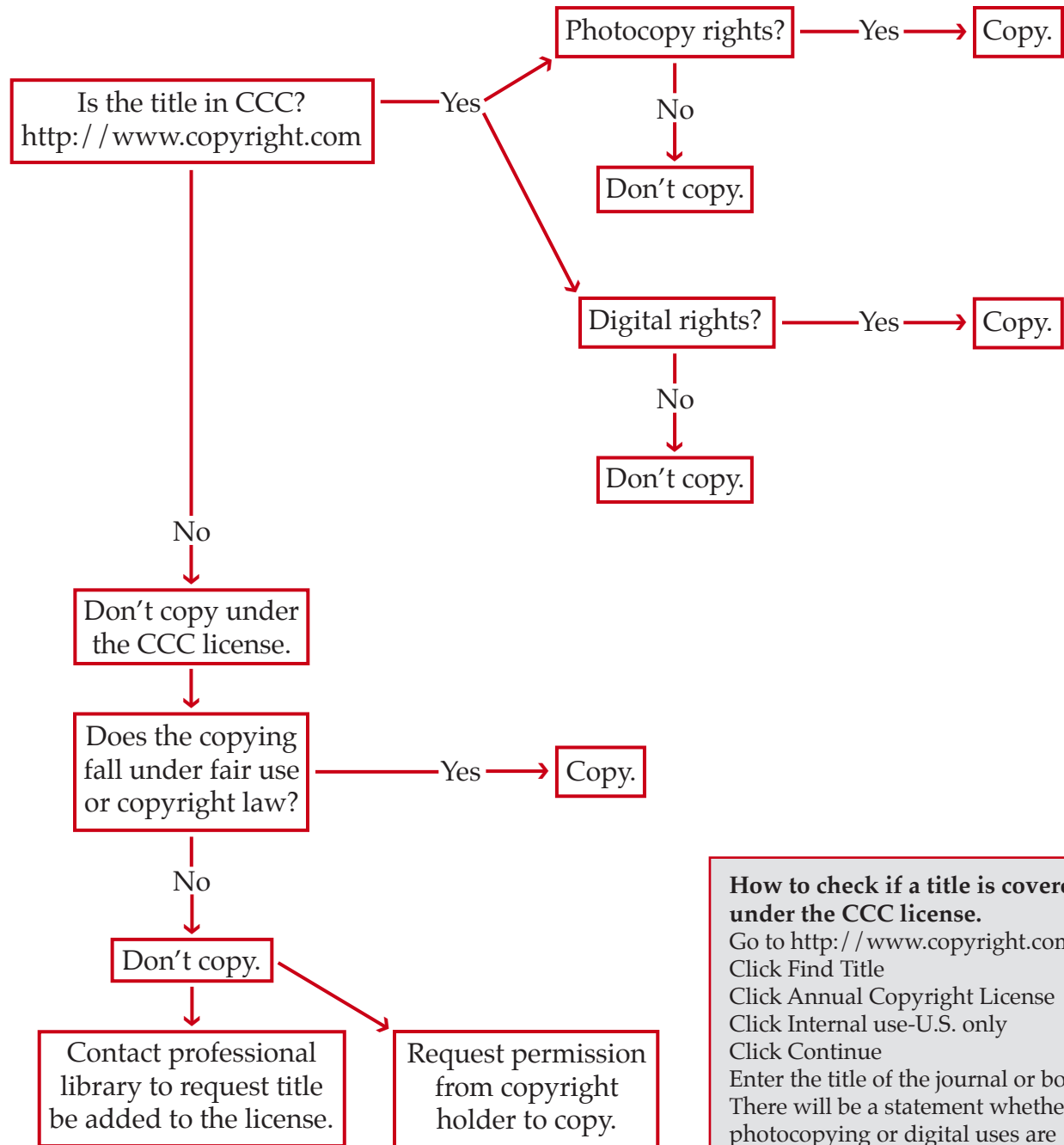


Copyright Clearance Center, Inc. Flowchart

There are five rules to follow:

1. The copying must be done from an original that is a lawfully acquired copy.
2. The copying allowed under this license is only for the titles listed in the CCC database, <http://www.copyright.com>.
3. It's the employee's responsibility to check the CCC database for license permissions (photocopy or digital uses).
4. The copying is for Internal Purposes only.
5. Each copy should include a copyright permissions statement:

Copies made under Heartland AEA license from Copyright Clearance Center, Inc.
No further reproduction is permitted.



How to check if a title is covered under the CCC license.
Go to <http://www.copyright.com>
Click Find Title
Click Annual Copyright License
Click Internal use-U.S. only
Click Continue
Enter the title of the journal or book
There will be a statement whether photocopying or digital uses are covered.



Heartland Area Education Agency 11 does not discriminate based on gender, race, national/ethnic origin, creed, age, marital status, sexual orientation, or disability. Direct inquiries to the Affirmative Action Coordinator, 6500 Corporate Dr., Johnston, IA 50131-1603, or Director, Office for Civil Rights, Chicago, IL 60606-7204.